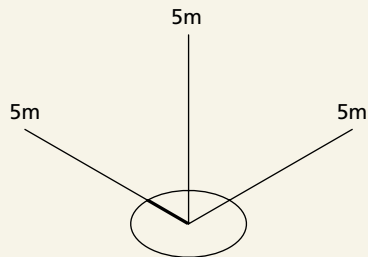
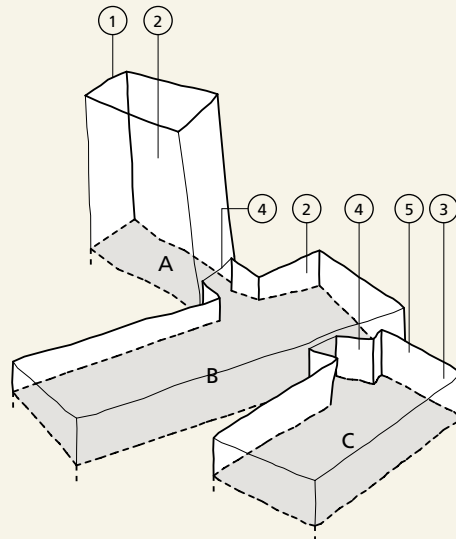
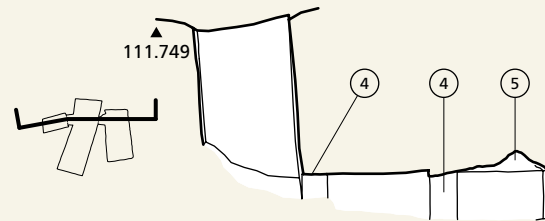
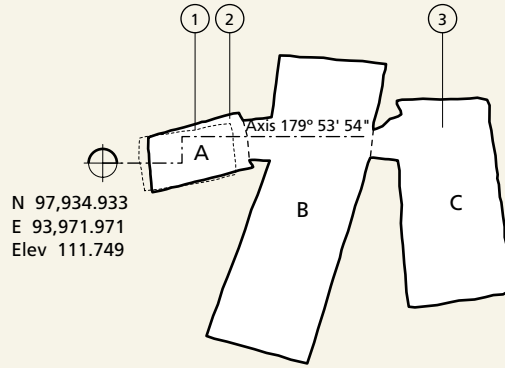


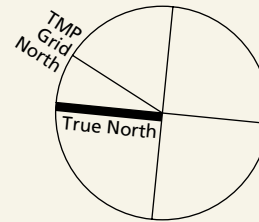
QV 21



Courtesy of the Getty Conservation Institute and the Ministry of Tourism and Antiquities.

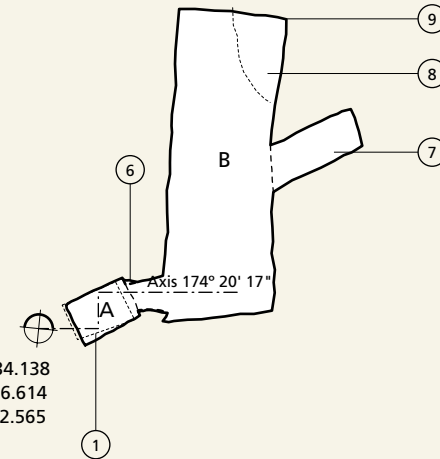
NOTES

1	Top of pit.
2	Pit shaft and chamber B are well cut.
3	Broken and uneven stone in chamber C.
4	Doorway dimensions approximate.
5	Ceiling collapsed in chamber C; dimensions approximate.
6	Doorway badly damaged; both jambs estimated.
7	Ceiling collapsed above; niche cut very roughly in poor stone.
8	Ceiling collapsed.
9	Location of corner estimated.



QV 22

N 97,934.138
E 93,976.614
Elev 112.565



Section of QV 22 could not be resolved from survey notes.